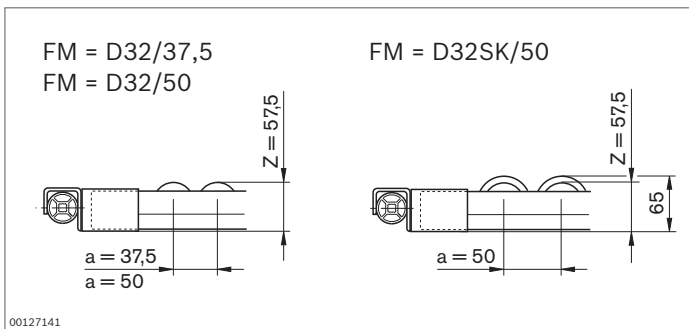
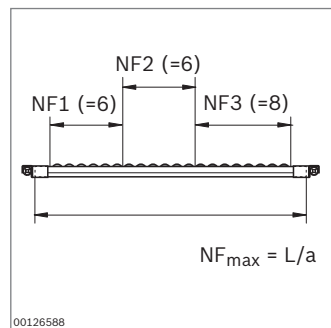
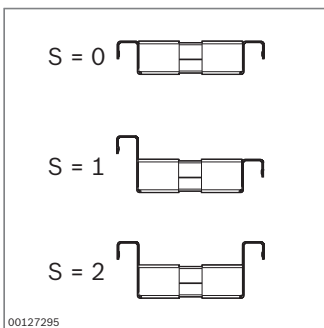
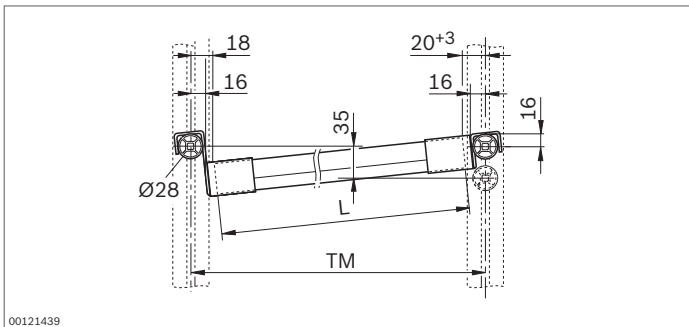


Lean conveyor tracks with rail holder

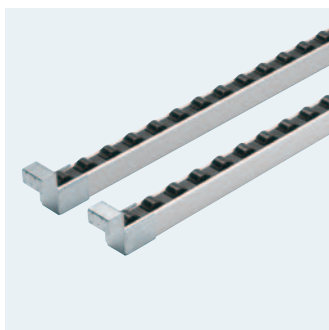


- ▶ Aluminum U-profile conveyor track
- ▶ Conveyor media to meet all requirements:
 - Rollers with or without roller flange. Four colors to visually identify inventories (kanban) or to differentiate between good and reject parts.
 - Roller elements with and without roller flange (RE45, RE45SK)
 - Slide rails with or without integrated lateral guide (GS, GSSK)
- ▶ Rail holders for suspending to tubular cross tie
- ▶ Available in ESD-conductive version (U-profile: bare aluminum)

Scope of delivery: conveyor track consisting of two conveyor sections (right/left) with rail holders

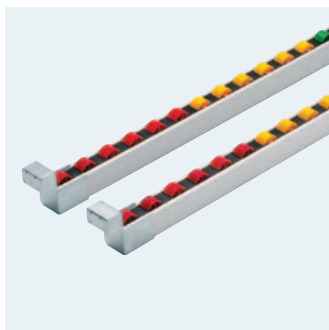


MTpro For workstation design and planning,
we recommend **MTpro!**
See pages 12 and 13 for more information.



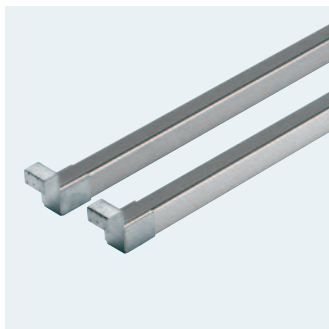
00121021

Conveyor track with rail holder, single-color rollers		3 842 998 381
ESD	Conductivity	Yes, no
TM	Horizontal distance between tubular cross ties	355 ... 6000 mm
G	Gradient	0 ... 10% (recommended: 6%)
FM	Conveyor medium	Rollers with Ø32 mm with/without roller flange, various spacings
F	Roller color	Black, red, yellow, green
S	Rail holder design	With/without stop
SF	Lateral guide	With, without



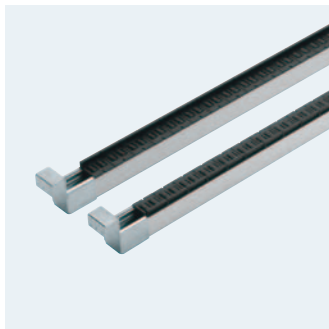
00121018

Conveyor track with rail holder, multi-color rollers		3 842 998 382
ESD	Conductivity	Yes, no
TM	Horizontal distance between tubular cross ties	355 ... 6000 mm
G	Gradient	0 ... 10% (recommended: 6%)
FM	Conveyor medium	Rollers with Ø32 mm with/without roller flange, various spacings
F1	Roller color	Black, red, yellow, green
NF1	Number of rollers in color 1	Max. 160
F2	Roller color	Black, red, yellow, green
NF2	Number of rollers in color 2	Max. 160
F3	Roller color	Black, red, yellow, green
NF3	Number of rollers in color 3	Max. 160
S	Rail holder design	With/without stop
SF	Lateral guide	With, without



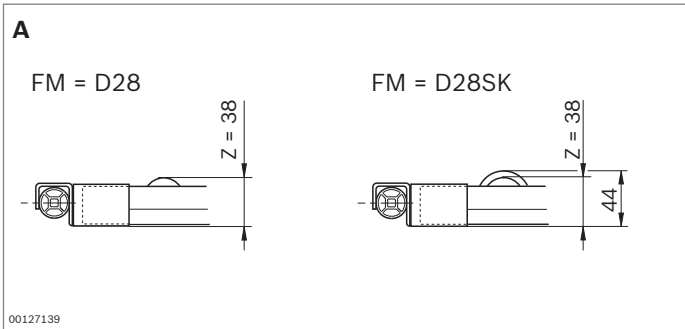
00121032

Conveyor track with rail holder, slide rails		3 842 998 387
ESD	Conductivity	Yes, no
TM	Horizontal distance between tubular cross ties	355 ... 6000 mm
G	Gradient	0 ... 10% (recommended: 6%)
FM	Conveyor medium	Slide rails with/without border
S	Rail holder design	With/without stop
SF	Lateral guide	With, without



00121049

Conveyor track with rail holder, roller elements		3 842 998 385
ESD	Conductivity	Yes, no
TM	Horizontal distance between tubular cross ties	355 ... 6000 mm
G	Gradient	0 ... 10% (recommended: 6%)
FM	Conveyor medium	Roller element with/without border
S	Rail holder design	With/without stop
SF	Lateral guide	With, without

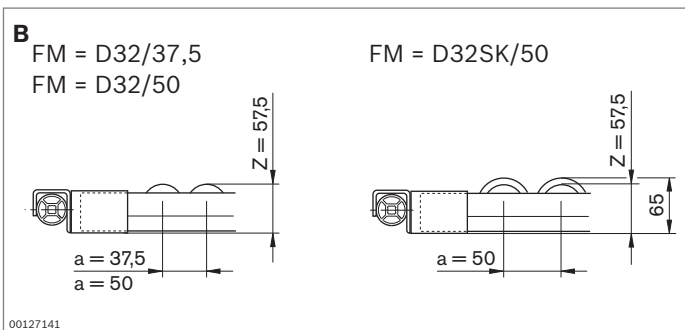


Conveyor tracks

Conveyor track XLean with rail holder (A)

- Rollers with Ø28 mm with and without roller flange.

3 842 998 196 (🔗📄 90)

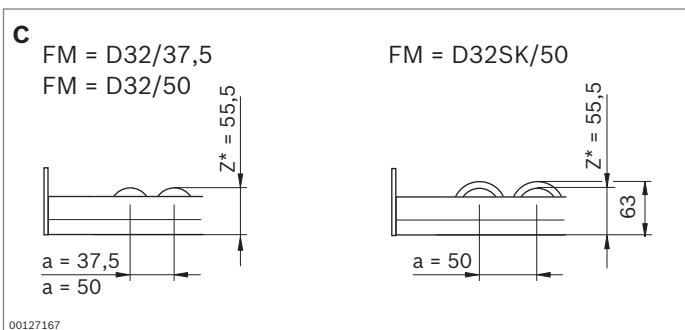


Conveyor track Lean with rail holder (B)

- Rollers with Ø32 mm with and without roller flange.

3 842 998 381 (🔗📄 95)

3 842 998 382 (🔗📄 95)

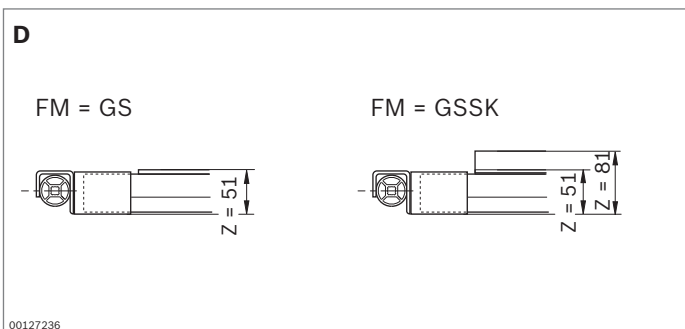


Conveyor track Lean with stop plate (C)

- Rollers with Ø32 mm with and without roller flange.

3 842 998 383 (🔗📄 97)

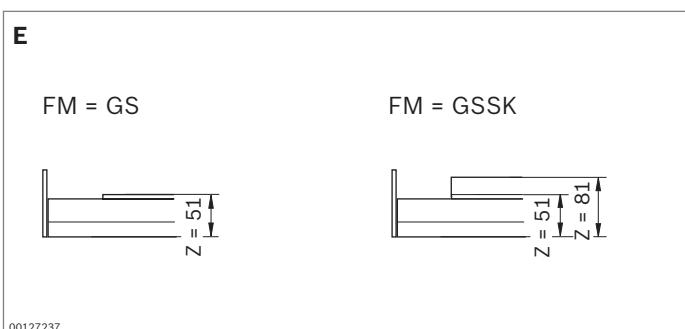
3 842 998 384 (🔗📄 97)



Conveyor track Lean with rail holder (D)

- Slide rail with and without roller flange.

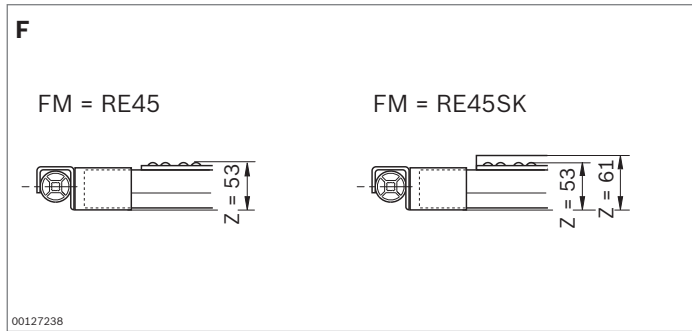
3 842 998 387 (🔗📄 95)



Conveyor track Lean with stop plate (E)

- Slide rail with and without roller flange.

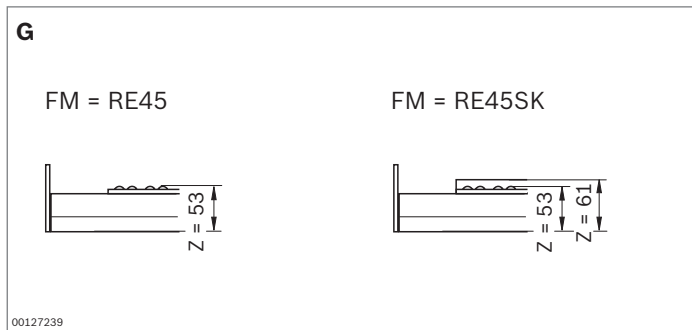
3 842 998 388 (🔗📄 97)



Conveyor track Lean with rail holder (F)

► Roller elements with and without roller flange.

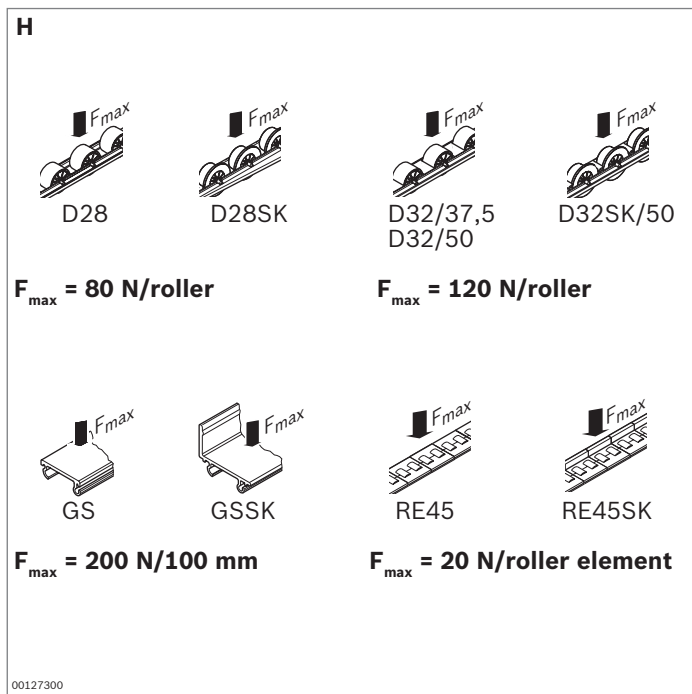
3 842 998 385 (📄 95)



Conveyor track Lean with stop plate (G)

► Roller elements with and without roller flange.

3 842 998 386 (📄 97)



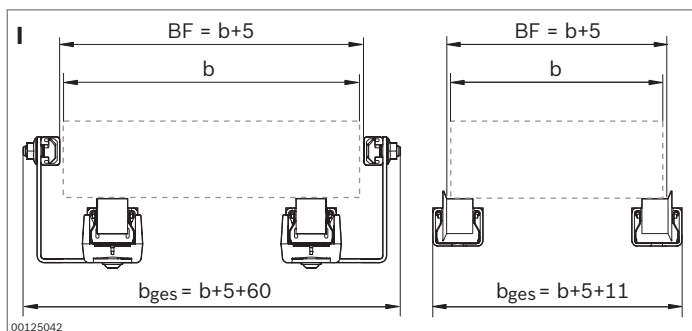
Conveyor media (H)

D28, D28SK (📄 91)

D32/37,5, D32/50, D32SK/50, GS, GSSK

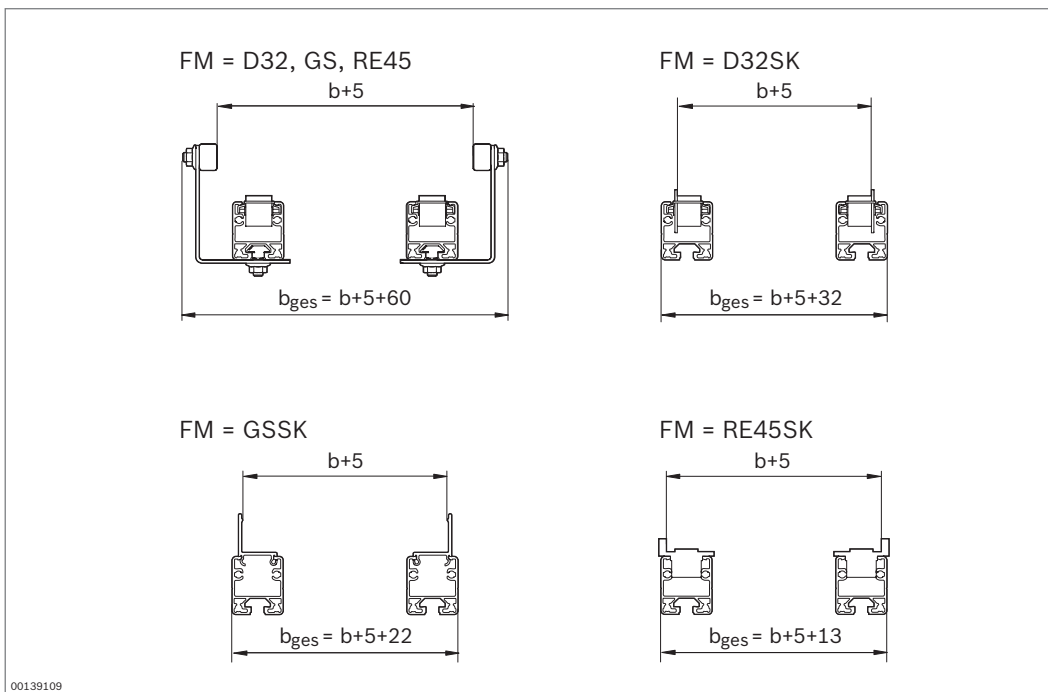
(📄 94, 96, 98, 99)

RE45, RE45SK (📄 94, 96, 99)

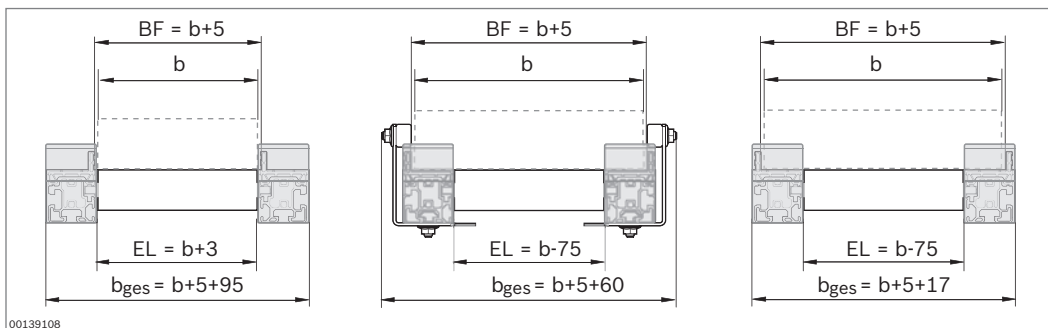


Conveyor tracks with and without lateral guide (I)

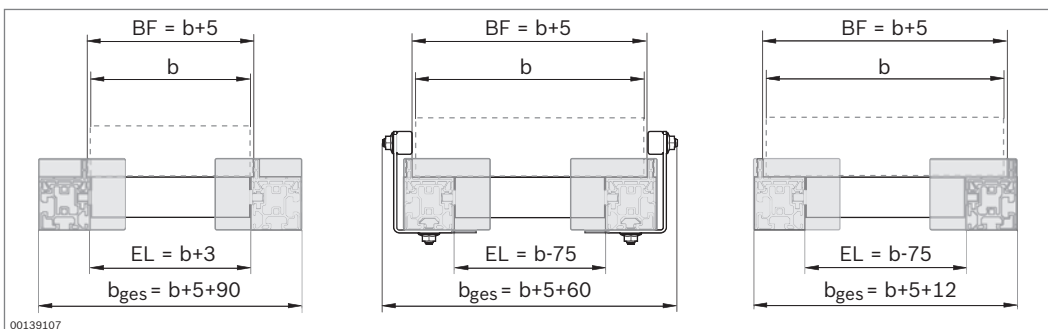
Conveyor track XLean



Conveyor track Lean



Conveyor track EcoFlow with rail holder



Conveyor track EcoFlow with stop plate

EL = Roller length